

WOLFA TRENCH DRAINAGE SYSTEM

WOLFA Trench drainage systems

- * Made from GRP
- * Robust and break-resistant
- * Resistant to de-icing salt and frost
- * Resistant to UV radiation and heat



WOLFA

Table of content

	Page
Introduction	3
Trench drains	3
Trench drainage systems / Linear drains	6
100/6 and 100/8,5S	7
100/6V and 100/8V and 100V line	8
100/10T	11
150F, 150K and 150V line	12
200F and 200V line	13
100/6VD	14
Fixo 110, Fixo 150	15
Slot drains	16
100/6VS, 100/8VS and 100VS line	17
Flat drains (AquaStop)	18
AquaStop Premium / Ultra / Ultra 150 / 150-OS	19
AquaStop Mini / Klassik / Maxi	20
Point drains	23
Point drainage 25/25	23
Point drainage 30/30	24
Technical overview	25
Neutral sloped Vs. Sloped Trench drains	25
System overview	26
WOLFA trench drain types and grating variants	27
Installation instructions	28



Trench drains

Made of GRP and metal – light and robust

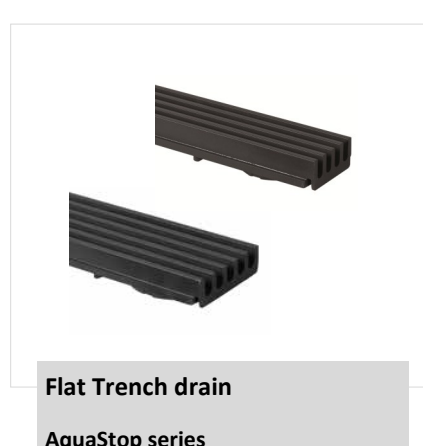
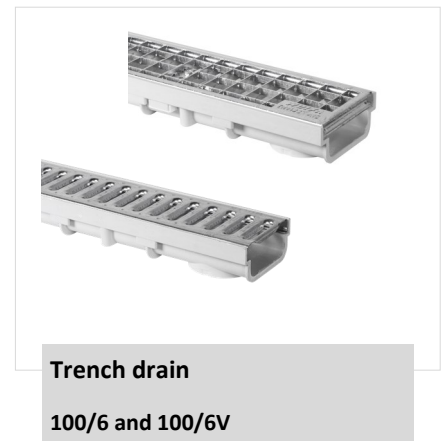
WOLFA has been producing and processing Glass fiber Reinforced Polyester (GRP) for over 65 years. Thanks to its excellent material characteristics, this thermosetting plastic is used in all industries where durability and structural stability is essential. GRP has become an integral and indispensable component in automotive, shipbuilding, and aerospace industries.

As a pioneer in the production of GRP, **WOLFA** utilizes a unique blend of polyester resin, mineral filling material, and a high concentration of glass fibers to create a Sheet Molding Compound (SMC). This combination of glass fiber and thermosetting polyester resin ensures unparalleled stability and

shape retention, even in extreme conditions.

SMC's key advantage is its ability to maintain shape and stability despite temperature fluctuations, unlike traditional thermoplastics. This characteristic makes **WOLFA's** GRP trench drains a superior choice, offering a lightweight alternative to concrete or polymer concrete trench drains, resulting in more economical transportation and handling.

Additionally, **WOLFA's** GRP trench drains exhibit excellent resistance to different chemicals, acids, and environmental factors, making them a long-lasting solution for various applications.





Raw SMC material



Production of GRP products



Trench drain
150F



Trench drain
150K



Trench drain
150/V Line



Trench drain
200F



Trench drain
200/V Line



Point Drain



As one of the first companies in Europe, **WOLFA** has been producing and processing, Glass fiber Reinforced Polyester (GRP) since 1955. The particular characteristics of this plastic material, 60 years of experience, and **WOLFA** expertise in producing and processing GRP guarantee unique and unmatched products for a great variety of applications. This thermosetting plastic material is weather-proof and inherently stable, with less thermal expansion to prevent the shape distortion.



Key advantages of **WOLFA** innovative GRP material:

- Cost effective
- Resistant to frost, heat and hot asphalt
- Lightweight
- Resistant to oil, gasoline and liquid manure
- Easy to clean due to non-porous structure
- Resistant to a multitude of chemicals
- Extremely high load capacity
- Easy to handle
- High temperature resistance (up to 394°F)

WOLFA Trench drains

Versatile, easy to install and equipped with tailor-made accessories

The **WOLFA** trench drains with various widths are available in three different heights and shapes. Depending on the trench drain type and grating, the trench drains can be used in many different ways and for loads of up to Class D 400. Simple and compact plug-in connection by means of a safety seam, one catch basin for all three sizes, and screwed gratings are some of the advantages of the system.



Areas of Application:

- Landscaping
- Residential buildings
- Garages
- Driveways
- Patios
- Facades
- Underground parking entrance

WOLFA Trench drain 100/6 100/8.5S

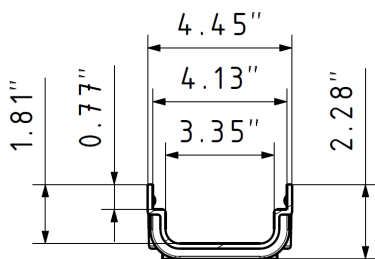
The ideal trench drain for residential property. Thanks to the clipped gratings, the trench drain is easy to clean without any tools. The plug-in connection with safety seam allows a fast and easy installation.

Trench drain 100/6

Load class A 15



- Installation height: 2 3/8"
- Width: 4 1/2", inner width: 3 3/8"
- Drain spout: 4"

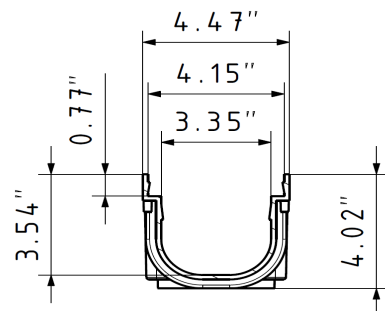


Trench drain 100/8.5S

Load class A 15



- Installation height: 4"
- Width: 4 1/2", inner width: 3 3/8"
- Drain spout: 4"



Accessories 100/6

- Metal strips for trench drain fastening on the unfinished floor
- Trench drain end guard
- 4" Drain connection kit with intake filter, odor stop and two lateral end guards.
- Variable elbow piece (for corner, T or cross connections)
- Elevation Bracket

Accessories 100/8,5S

- Metal strips for trench drain fastening on the unfinished floor
- Trench drain end guard
- 4" Drain connection kit with intake filter, odor stop and two lateral end guards.
- Variable elbow piece (for corner, T or cross connections)
- 90-degree corner angle size 19"×14" (for 100/8.5S only)
- Elevation Bracket



Variable elbow piece for corner, T or cross connections



Drain connection kit



Elevation bracket

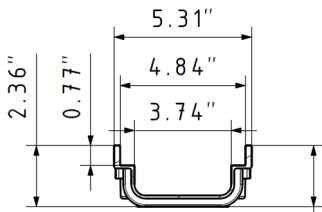
Modern Design for trench drains

Flat trench drain 100/6V

Load class A 15 - C 250



- Installation height: 2 3/8"
- Width: 5 3/8" inner width: 3 3/4"
- Drain spout: 4"

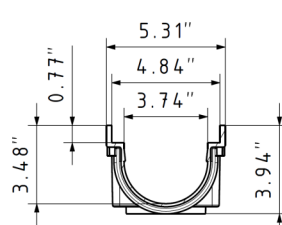


Trench drain 100/8V

Load class A 15 - C 250



- Installation height: 4"
- Width: 5 3/8" , inner width: 3 3/4"
- Drain spout: 4"

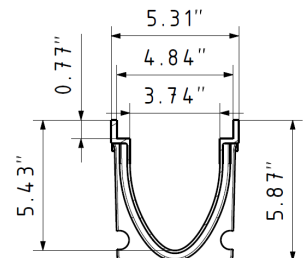


Trench drain 100V line

Load class A 15 - D 400



- Installation height: 6"
- Width: 5 3/8" , inner width: 3 3/4"
- Drain spout: 4"



Colors: Light grey Charcoal grey

Accessories 100/6V and 100/8V

- Metal strips for trench drain fastening on the unfinished floor
- Trench drain end guard
- 4" Drain connection with intake filter, odor stop, and two lateral end guards.
- Catch basin and adapter for catch basin
- 4" Drain connection ring with lateral outlet
- Variable elbow piece for corner, T or cross connection
- Trench drain elevation

Accessories 100V line

- Trench drain end guard
- 4" Drain connection kit with intake filter odor stop and two lateral end guards.
- Lateral 4" drain connection
- 4" Drain connection ring with lateral outlet
- Variable elbow piece for corner, T or cross connection
- Catch basin 100V line



Variable elbow piece 100/6V



Drain connection kit for all types



Catch basin (with adapter) for all types



4" Lateral drain connection for 100V line

Accessories



Elevation Bracket



Variable elbow piece 100/6
For corner, T or cross connections



Corner angle for 100/8,5S

Grating options for 100/6 and 100/8.5S



Slotted grating
A 15



Pressure-locked grating- MW 30/30
A 15



Pressure-locked grating- MW 30/10
A 15

Areas of Application:

- Landscaping
- Residential buildings
- Garages
- Driveways
- Patios
- Facades



Grating Options

Thanks to the large variety of grating options for load classes A 15 – D 400, these trench drains are suitable for residential, commercial and industrial applications. All gratings are bolted and drains have quick-connect ends which slide into place.



Longitudinal GRP bar grating
Charcoal grey | A 15



Longitudinal GRP bar grating
Light grey | A 15



Plastic grating
Charcoal grey | B 125



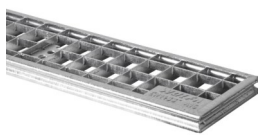
Slotted GRP design grating
Charcoal grey | A 15



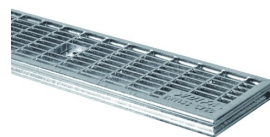
Slotted GRP design grating
Light grey | A 15



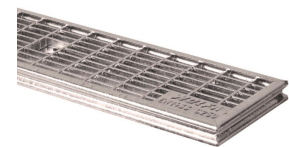
Slotted grating
A 15 and C 250



Pressure-locked grating MW 30/30
A 15 and C 250



Pressure-locked grating MW 30/10
A 15 and C 250



Pressure-locked grating V2A
MW 30/10 | C 250



V2A perforated design grating
A 15 and C 250



Longitudinal V2A bar grating
A 15



Cast iron grating
C 250 and D 400

Trench drain 100/10T

Load class A 15

This trench drain is suitable for many applications with surface-mounted, screwed-in-place slotted grating or longitudinal V2A bar grating. The entire trench drain body is covered by the grating, therefore, the edges are completely protected.



- Installation height: 5 1/4"
- Width: 5 3/8" , inner width: 5 1/4"
- Drain spout: 4"

Unmatched protection!

The trench drain body is completely covered by the grating (Illustration with longitudinal V2A bar grating)

Colors: Light grey

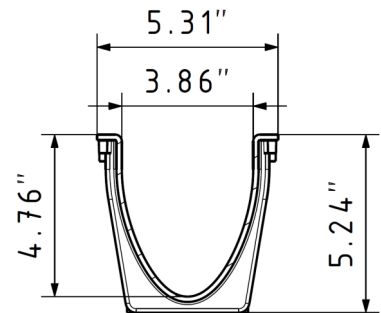
Grating Options 100/10T



Slotted grating
A 15



Longitudinal V2A bar grating
A 15



Accessories 100/10T

- Trench drain end guard
- 4" Drain connection kit
- Lateral 4" drain connection
- Catch basin



Catch basin



Lateral drain connection

Areas of Application:

- Garages
- Driveways
- Patios
- Facades

Trench drains 150F, 150K and 150V line

Load class A 15 - D 400

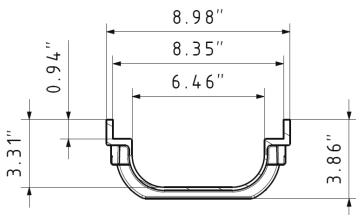
The ISO series trench drains with a width of 6 1/2" are available in three different installation heights. Thanks to the many different grating options for load classes A 15 - D 400, the 150 trench drains can also be used on commercial premises. All gratings are bolted and have extra sturdy 3/8" thick GRP or integrated, galvanized 1/8" steel edge.

Trench drain 150F

Load class A 15 - D 400



- Installation height: 3 7/8"
- Width: 9" , inner width: 6 1/2"
- Drain spout: 5"

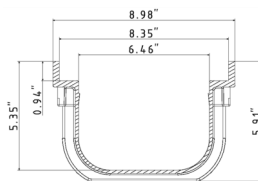


Trench drain 150K

Load class A 15 - D 400



- Installation height: 6"
- Width: 9", inner width: 6 1/2"
- Drain spout: 5"

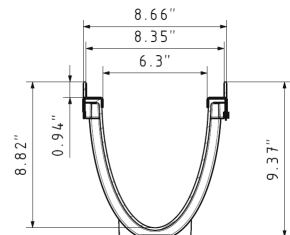


Trench drain 150V line

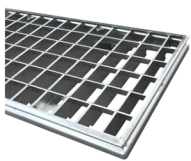
Load class A 15 - D 400



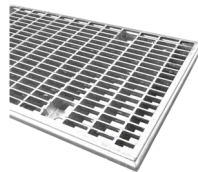
- Installation height: 9 3/8"
- Width: 9", inner width: 6 1/2"
- Drain spout: 5"



Grating variants



Pressure-locked grating
MW 30/30
A 15 and B 125



Pressure-locked grating
MW 30/10
A 15 and B 125



Cast iron grating
C 250 and D 400



Pressure-locked V2A
grating
MW 30/10



Longitudinal GRP grating light
gray
Class B 125

Options:

- Metal strip for fastening on unfinished Floors (for 150F and 150K)
- Trench drain end guard
- 5" Drain connection kit with discharge nozzle
- Mud bucket and odor stop
- Adapter for catch basin for 150F and 150K
- Catch basin



Drain connection
kit



Catch basin



Lateral drain connection for 5"
pipe (150V line)

Colors:

light gray

charcoal gray
upon request!

Trench drain 200F and 200V line

Load class B 125 - D 400

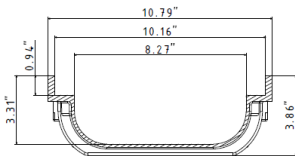
The new large 200series trench drains for the intake of large quantities of water. These **WOLFA** trench drains with a width of 8 1/4" are available with an installation height of 9 3/8" or as flat trench drain with an installation height of only 4" All gratings are bolted, with quick connect ends that slide into place. Extra sturdy 3/8" thick GRP edges or integrated, galvanized 1/8" steel edge are available upon request.

Flat trench drain 200F

Load class B 125 - D 400



- Installation height: 4"
- Width: 10 3/4", inner width: 8 1/4"
- Drain spout: 5"

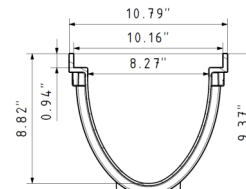


Trench drain 200V line

Load class B 125 - D 400

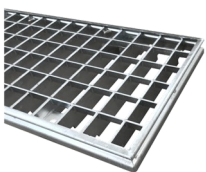


- Installation height: 9 3/8"
- Width: 10 3/4", inner width: 8 1/4"
- Drain spout: 5"

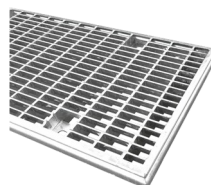


Colors:
 light gray

Grating variants



Pressure-locked grating MW 30/30
A 15 and B 125



Pressure-locked grating MW 30/10
A 15 and B 125



Cast iron grating
C 250 and D 400

Accessories 200F

- Metal strips for trench drain fastening on the unfinished floor
- Elevation Bracket
- Trench drain end guard
- 5" Drain connection kit with discharge nozzle
- Mud bucket and odor stop
- Adapter for catch basin
- Catch basin

Accessories 200V line

- Trench drain end guard
- 5" Drain connection kit with discharge nozzle ,mud bucket and odor stop
- Lateral 6" drain connection
- Catch basin 200V line with 4-side drain connection possibility for 6" and 8" pipe size

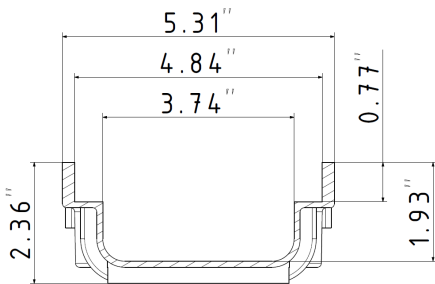
Trench drain 100/6VD

Load class A15

These drains are suitable for the eliminating, infiltration and drainage of surface water from patios and balconies, or for facade drainage. Gratings are safe for pedestrians and wheelchair users (ADA Compliant).

Technical Data

- Installation height: 2 3/8"
- Width: 5 3/8"
- Inner width: 3 3/4"
- Length: 40"
- Drain spout: 2" or 4" laterally

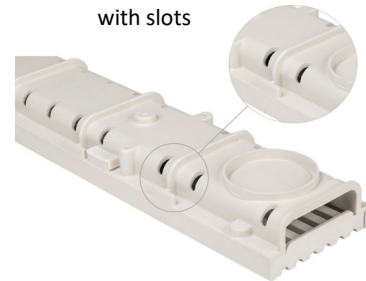


Colors:

- light gray
- charcoal gray



Trench drain body with slots



Trench drain gratings



Longitudinal GRP bar grating, charcoal grey



Longitudinal GRP bar grating, light grey



Plastic grating



VA2 slotted grating



Pressure-locked grating MW 30/30



Pressure-locked grating MW 30/10



V2A perforated design grating



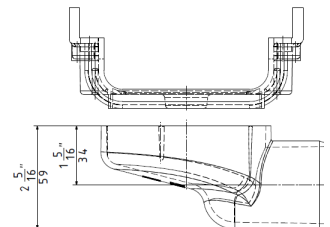
Longitudinal V2A bar grating

Accessories

- Sheet metal strips
- Trench drain end guard
- 4" Drain connection kit with intake filter, odor stop and two lateral end guards.
- 2" Drain connection ring with lateral outlet
- Adapter for catch basin
- Catch basin 100/V line without adapter
- Variable elbow piece 100/6V
- Elevation without metal strips

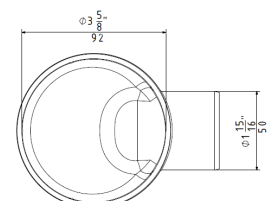


Drain connection ring 2" with lateral outlet



Areas of Application:

- Patios
- Balconies
- Facades



Trench drain FIXO

Load class A15

Made from durable galvanized sheet steel, **WOLFA** Drainage Trench Drain Fixo is the perfect solution for surface drainage and draining water-bearing layers between fill materials like gravel and stone chippings.

WOLFA Drainage Trench Drain Fixo features an installation height of 3" for easy integration and can be easily connected to multiple units using plug-in connectors. The trench drains are compatible with galvanized slotted gratings or pressure-locked gratings with 30/30 and 30/10 mesh widths, providing flexibility in design and functionality.

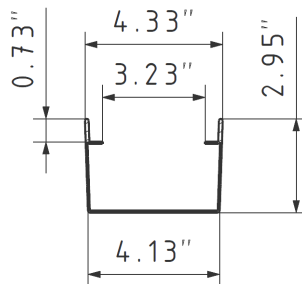


Box trench drain Fixo 110 with slotted grating

Fixo 110



- Installation height: 3", other heights upon request.
- Width: 4 3/8"
- Inner width: 4 1/8"
- Length: 40"



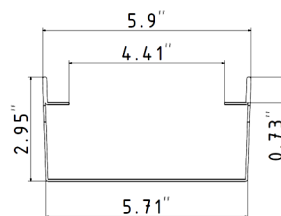
Options

- Grating lock (2 pieces per meter)
- Lateral connecting piece
- Trench drain end plate
- Lateral T-channel

Technical data Fixo 150

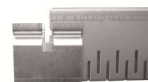


- Installation height: 3", other heights upon request.
- Width: 6"
- Inner width: 5 3/4"
- Length: 40"



Areas of Application:

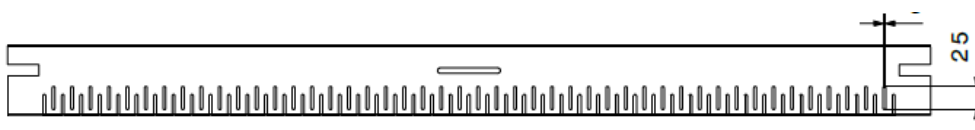
- Patios
- Balconies
- Facades



Lateral connecting piece



T-channel

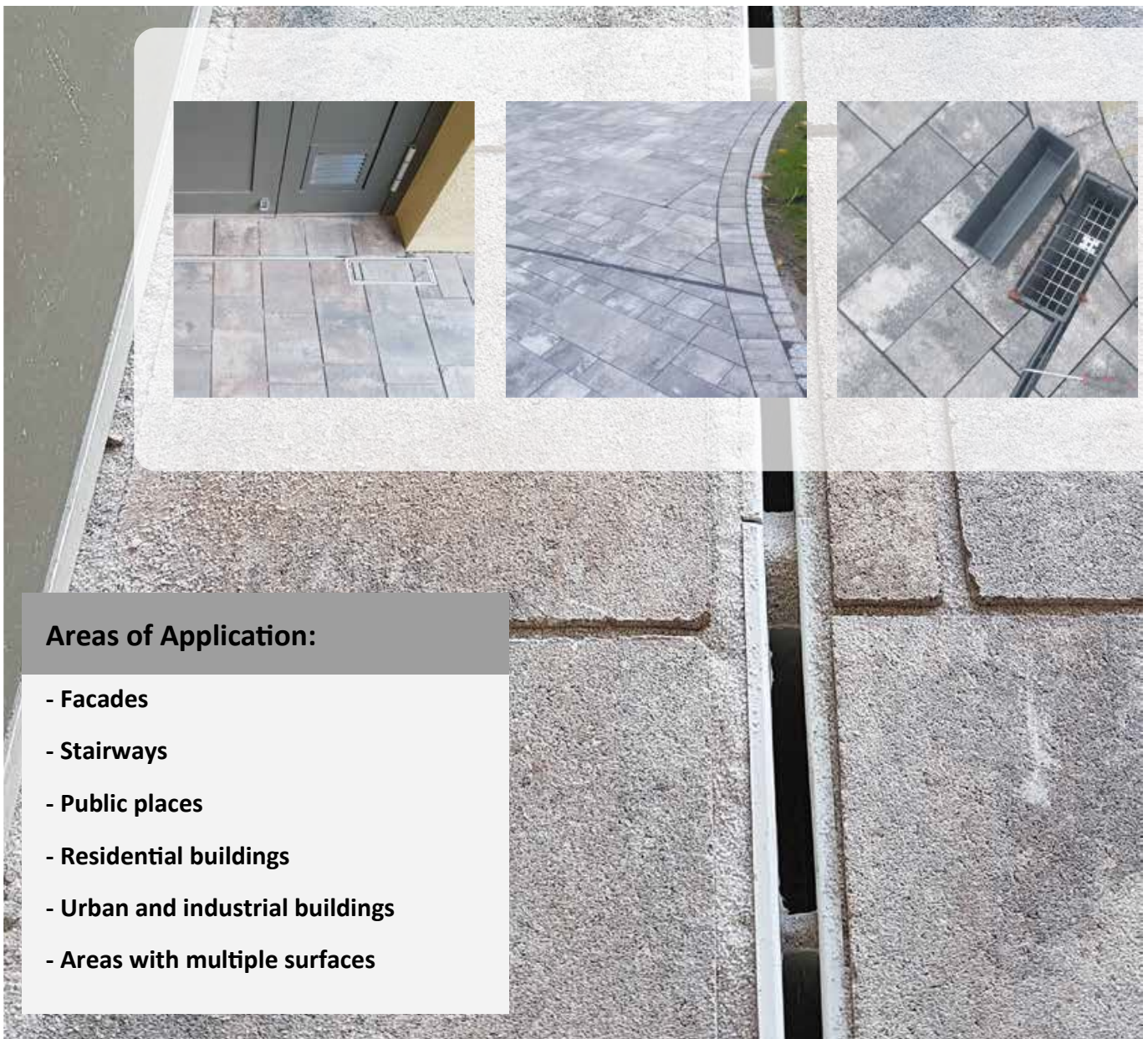


Other installation heights and widths can be supplied on request.

Slot drains :The smart drainage system

The **WOLFA** slot drain made of GRP is the most elegant solution when sophisticated architectural requirements need to be met. It allows an efficient channel drainage of facades, entrance areas, stairways, public areas and other sealed surfaces.

The slotted top is 4" high and replaces the broad drainage trench drain cover. With its opening width of merely 3/8" and optional colors of charcoal grey and light grey, the slot drain perfectly fits the look and design of any environment. The 1/4" GRP edges guarantee permanent and corrosion proof material that makes the slot drain suitable for areas with heavy traffic. These are available in three types of 100/6VS, 100/8VS, and 100/VVS line, to meet various requirements. For easy cleaning and maintenance, **WOLFA** provides catch basins for all three drain systems. Two special keys allow the removal of the inspection box and easy cleaning of the mud bucket. A height-adjustable elevation is available for trench drains 100/ 6VS and 100/ 8VS.



Areas of Application:

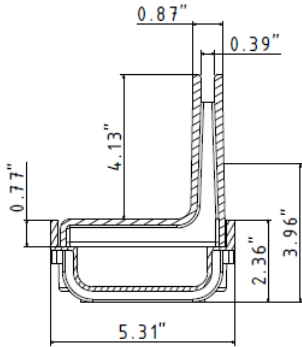
- Facades
- Stairways
- Public places
- Residential buildings
- Urban and industrial buildings
- Areas with multiple surfaces

Slot drain 100/6VS

Load class C 250



- Installation height: 6 1/2"
- Width: 5 3/8" , inner width: 3/8"
- Drain spout: 4"

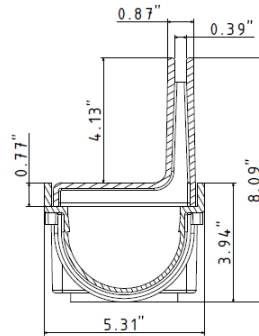


Slot drain 100/8VS

Load class C 250



- Installation height: 8"
- Width: 5 3/8" , inner width: 3/8"
- Drain spout: 4"

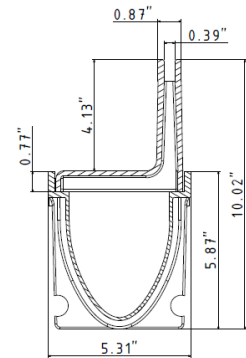


Slot drain 100VS line

Load class D 400



- Installation height: 10"
- Width: 5 3/8" , inner width: 3/8"
- Drain spout: 4"



Options:

- Sheet metal strips
- Elevation bracket
- Catch basin with inspection cap
- Trench drain end guard
- Adapter for catch basin
- Drain connection kit
- Inspection cap
- Keys for inspection cap

Advantages:

- Aesthetically pleasing finish
- With quick connect ends which slide into place
- Various drain capacities
- Extremely robust and durable
- Corrosion proof
- Resistance to temperature changes
- Light-weight



Drain with elevation bracket and catch basin with inspection cap



Flat trench drain AquaStop

The **WOLFA** AquaStop drains are designed to operate without gratings, making them an ideal choice for the drainage of residential, underground parking, and parking garages. With a low build height of 1 1/4", or 1 1/2", this multi-channel trench drain is perfectly suited for a variety of applications.

Constructed from high-quality GRP material, it is built to last, offering exceptional durability. Its design ensures efficient water management, preventing water accumulation and creating a safe and dry environment.



Areas of Application:

- Parking lots
- Underground parking
- Industrial buildings
- Patios
- Balconies



Flat trench drain AquaStop

The **WOLFA** trench drains AquaStop Drain 150 and AquaStop Ultra 150 have an elegant design. In order to safely discharge the surface water, **WOLFA** developed a new drain connection especially for patios, balconies and areas with limited space for floor installation.

Advantages:

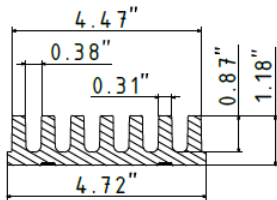
- Installation height of just 1", 1 1/4" or 1 1/2"
- Maintenance-free (no Grating)
- Resistant to a multitude of chemicals
- Extremely high load capacity
- Easy to clean

AquaStop Premium

Load class E 600



- Installation height: 1 1/4"
- Width: 4 3/4"
- Slot width: 3/8"
- Drain spout: 4"

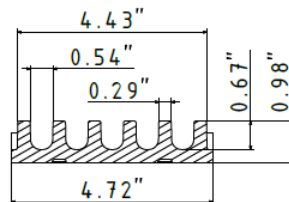


AquaStop-Ultra

Load class D 400



- Installation height: 1"
- Width: 4 3/4"
- Slot width: 1/2"
- Drain spout: 4" and 5"

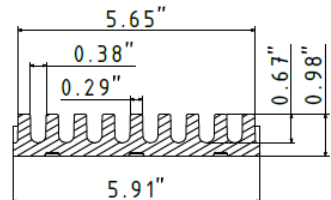


AquaStop Ultra 150

Load class E 600



- Installation height: 1"
- Width: 6"
- Slot width: 3/8"
- Drain spout: 4" and 5"

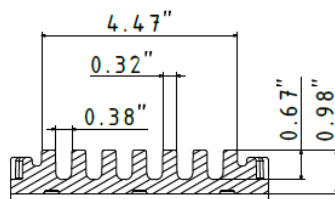


AquaStop 150-OS

Heavy-Duty



- Installation height: 1"
- Width: 6"
- Slot width: 3/8"
- Drain spout: 4" and 5"



With sealing flange for OS coating



Installation with elevation bracket

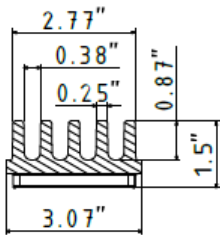
Flat trench drain AquaStop

AquaStop Mini

Heavy-Duty



- Installation height: 1 1/2"
- Width: 3 1/8"
- Slot width: 3/8"
- Drain spout: 2 3/4"

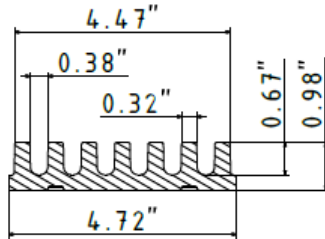


AquaStop Klassik

Load class D 400



- Installation height: 1 1/2"
- Width: 4 3/4"
- Slot width: 1/2"
- Drain spout: 2", 2 3/4", 4", 5"

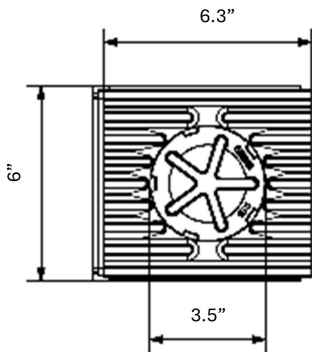
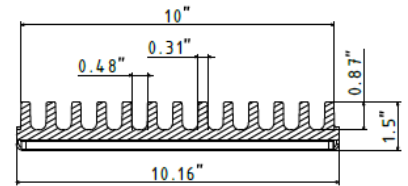


AquaStop Maxi

Heavy-Duty



- Installation height: 1 1/2"
- Width: 4 3/4"
- Slot width: 1/2"
- Drain spout: 4" and 5"



Straight intake filter with detachable inspection flap and 4" or 5" drain connection possibility



AquaStop in concrete



AquaStop in pavement



AquaStop in asphalt

AquaStop

Many ways to use!

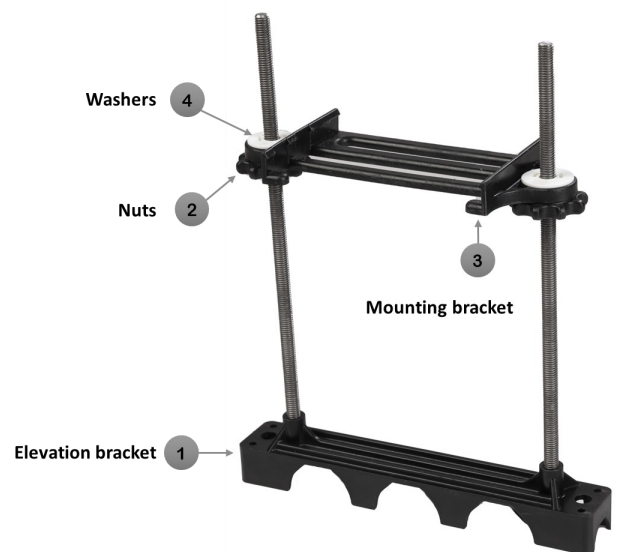
- Underground parking
- Parking garages
- Fire Stations
- Food processing industry
- Pedestrian paths
- Patios



The new WOLFA trench drain elevation

AquaStop with a plastic footing has been designed for use in waterproof concrete applications. Following concrete reinforcement, the threaded rods can be easily screwed into the plastic footing, facilitating a seamless installation process. The trench drain elevation unit enables a rapid and cost-effective installation of the trench drains.

To further facilitate installation, **WOLFA** also offers an installation cover plate, which keeps the trench drain body clean during installation and protects it during concrete pouring. The adjustable elbow piece allows trench drain connection on four sides, and the open sides can be closed with an end guard. The straight intake piece with a detachable inspection flap and various drain connections allows for vertical or lateral drainage of the trench drains.



For adjustment at heights between 1 1/4" - 12",
or 1 1/4" - 20"

Options



Trench drain elevation for height adjustment between for all types except Maxi and Mini

Trench drain elevation for height adjustment from for AquaStop Maxi and Mini



Installation cover plate for all types

Straight intake filter for all types



Variable elbow piece for all types except AquaStop Mini

Metal strips for all types



Drain connection ring 2 3/4" for AquaStop Mini

Drain connection ring 2 3/4" for AquaStop Mini



Drain connection ring 5" for all types except AquaStop Mini

Drain connection ring with odor stop for AquaStop, for all types except AquaStop Mini



Drain reducer piece 4"/>" for AquaStop and AquaStop-Ultra /Ultra 150

Drain connection ring 2" for all types except AquaStop Mini



Lateral trench drain end guard for all types

Variable curve piece allows inclinations of up to 7° for AquaStop Ultra



Cleaning tool for all types



AquaStop Maxi

Real Projects



Installation with trench drain elevation



Installation in existing recess



Point Drainage

Effective point drainage is crucial in various industries, including construction, manufacturing, and healthcare, to prevent water accumulation and ensure a safe and clean environment. Point drains play a vital role in achieving this goal, and **WOLFA** brand offers a range of high-quality point drains that provide numerous advantages.

WOLFA point drains are designed with durability and efficiency in mind, featuring a robust construction that withstands heavy usage and harsh environments. Their design allows for easy installation and maintenance, reducing downtime and increasing productivity. Additionally, **WOLFA** point drains are engineered to minimize clogging and ensure smooth water flow, reducing the risk of flooding and water damage.

Point Drainage 25/25

Load class B 125

This model is a perfect alternative to heavy concrete or polymer concrete point drainage. The plastic gratings or pressure-locked gratings are secured in their places with screws.



Advantages:

- Attractive look
- Robust and durable
- Heavy-duty
- Odor stop
- Light-weight
- Easy to install
- Low installation costs
- Mud trap

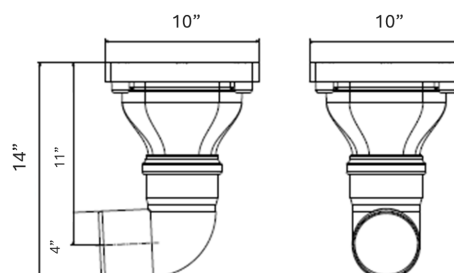
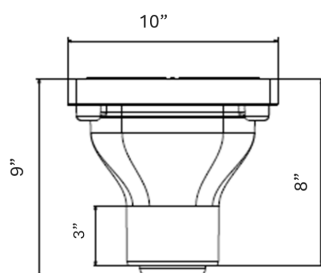
Areas of application

This is perfectly suited for areas with high traffic load, the intake and outlet of surface water from yards, driveways, entrance areas, pedestrian areas, patios and basements.

Technical Data

- Installation height: 8 5/8"
- Width: 10"
- Depth: 10"
- Drain spout: 4"
- Load class B125

Color(s):



Point Drainage 30/30

Load class B 125

The **WOLFA** Point Drain 30/30 is made of Glass fiber Reinforced Polyester (GRP) with the screwed-in-place grating.

Advantages:

- Attractive design
- Robust and durable
- Resistant to many types of chemicals and oil
- Temperature-resistant and dimensionally stable
- Suitable for installation in hot asphalt
- Easy to install
- Low installation costs

Colors:



Areas of application

For the intake and discharge of surface water from yards, driveways, entrance areas and pedestrian areas.

Technical Data

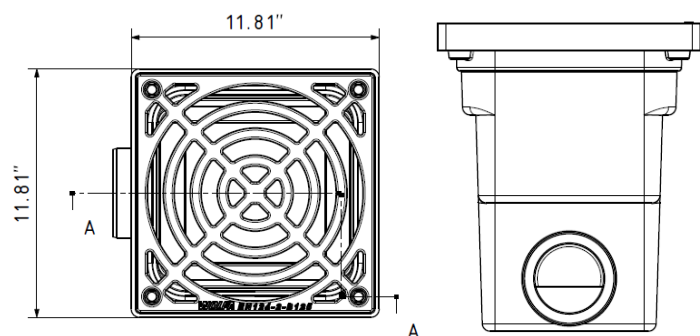
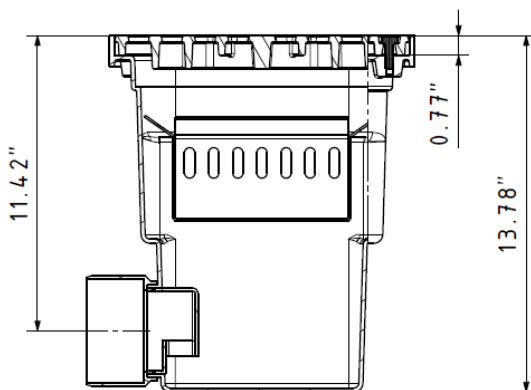
- Installation height: 13 3/4"
- Width: 12"
- Depth: 12"
- Drain spout: 4"
- Load class B125



Point Drain with cast iron grating class B 125 and odor stop

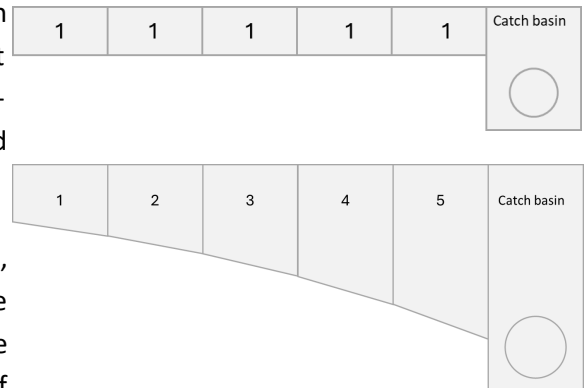


With detachable, hot-dipped mud trap and 4" drain connection



Neutral sloped Vs. Sloped Trench drains

When it comes to trench drainage systems, the choice between neutral-sloped and pre-sloped designs can significantly impact installation costs, maintenance, and overall efficiency. Neutral-sloped trench drains are gaining popularity as a versatile and cost-effective alternative to traditional sloped systems.



The flow rate of a trench drain is affected by the height, width, and length of the drain body. These factors impact the performance of trench drains, regardless of whether they are sloped or neutral. A typical sloped trench drain system starts off with a shallow sloped body section and ends with a deeper sloped body section. This means that the body height is not consistent and the volume capacity of the sloped system is less than the volume capacity of a neutral sloped system that has the same body height throughout the run. Neutral-sloped trench drains maintain a consistent height, offering a larger volume and higher flow capacity compared to sloped systems with 0.5–0.6% gradients. A substantial increase in flowrate can only be achieved with a slope of 1.6% .

Additionally, if any component of the sloped drainage system becomes damaged or leaks, it can only be replaced by a part with the same specifications, while in neutral sloped trench drains, all parts have the same specifications and replacement can be done faster and easier.

Unlike sloped trench drains that rely on built-in gradients, neutral-sloped systems use consistent trench profiles and external piping to achieve proper flow. This innovative design eliminates many of the challenges associated with sloped systems, such as complex grading, deeper excavations, and limited design flexibility.

Advantages of neutral sloped trench drains

- **Cost-Effective Installation** :Requires no precise slope grading, reducing excavation and material costs
- **Flexible Design**: Works with external piping to achieve drainage, allowing simpler layouts
- **Easier Maintenance and replacement**: Consistent design simplifies cleaning ,inspection and replacement
- **More suitable for Long Runs**: Ideal for long trench runs as slope issues are nonexistent!
- **Higher material Efficiency**: Uses uniform trench sections, minimizing material waste



WOLFA trench drain system overview

Trench drain types and grating variants and their load classes according to DIN EN 1433

Trench drain type	Grating model/ Load class									Slotted top of GRP	In accordance with DIN EN 1433/ DIN 19580
	Slotted grating	Plastic gratings		Pressure-locked gratings		Cast iron grating	V2A Stainless steel gratings				
	Galvanized	Plastic grating	GRP Longitudinal bar grating	Mesh width 30/30m m	Mesh width 30/10m m		Slotted VA2 gratings	Longitudinal VA2 bar grating	VA2 Design grating		
100/6	A15	-	-	A15	A15	-	-	-	-	-	✓
100/6V	A15	B 125	A15	A15 C250	A15 C 250	C250	A15 C 250	A15	A15	D400	✓
100/8.5S	A15	-	-	A15	A15	-	-	-	-	-	✓
100/8V	A15	B125	A15	A15 C250	A15 C 250	C250	A 15 C250	A15	A15	D400	✓
100/10T	A15	-	-	-	-	-	-	A15	-	-	✓
100V line	A15	B125	A15	A15 C250	A15 C 250	C 250 D400	A 15 C250	A15	A15	D400	✓
150F with GRP/Steel edges	-	-	-	A15 B 125	A15 B 125	C250 D400	-	-	-	-	✓
150 V with GRP/Steel edges	-	-	-	A15 B125	A15 B 125	C 250 D400	-	-	-	-	✓
150K	-	-	-	A15 B 125	A 15 B 125	C 250 D400	-	-	-	-	✓
200F with GRP/Steel edges	-	-	-	B125	B125	C 250 D 400	-	-	-	-	✓
AquaStop Mini	Multi-channel trench drain without grating– for heavy traffic area									-	-
AquaStop Klassik	Multi-channel trench drain without grating– load class up to D 400									-	✓
AquaStop Ultra	Multi-channel trench drain without grating– load class up to D 400									-	✓
AquaStop Ultra 150	Multi-channel trench drain without grating– load class up to E 600									-	✓
AquaStop Premium	Multi-channel trench drain without grating– load class up to E 600									-	-
AquaStop Maxi	Multi-channel trench drain without grating– load class up to E 600									-	-

Each application its perfect trench drain

Class A 1: Pedestrian areas and bike tracks

Class B 125: Parking areas for cars and sidewalks

Class C 250: Road and sidewalk shoulders and Road sides

Class D 400: Road lanes, parking areas, pedestrian areas and Similar sealed traffic areas

Class E 600 : Surfaces that must bear high wheel loads, e.g. Industrial and military premises

*Test load in kN as set forth in DIN EN 1433

Technical overview: WOLFA drainage trench drains and grating variants

Type	100/6	100/8,5S	100/6V	100/8V	100/10T	100V line
Body material	GRP	GRP	GRP	GRP	GRP	GRP
Length	40" and 20"	40" and 20"	40" and 20"	40" and 20"	40" and 20"	40" and 20"
Installation width	4 1/2"	4 1/2"	5 3/8"	5 3/8"	5 3/8"	5 3/8"
Height	2 3/8"	4"	2 3/8"	4"	5 1/4"	6"
Inner width	3 3/8"	3 3/8"	3 3/4"	3 3/4"	4"	3 3/4"
Weight (lbs)	3.1 - 1.55	3.9 - 2	3.3 - 1.8	5.1 - 2.7	5.7	5.3 - 2.7
Color	Light grey	Light grey	Light grey/ Charcoal grey	Light grey/ Charcoal grey	Light grey	Light grey/ Charcoal grey
Drain spout NPS	4"	4"	4"	4"	4"	4"
Load capacity	A15	A15	A15-C250	A15-C250	A15	A15-C250
Grating	Inserted	Inserted	Screwed in place	Screwed in place	Screwed in place	Screwed in place
Cross section (inch ²)	3.5	8.7	4.2	8.7	14.8	14.1
Gallon/ Foot	0.59	1.48	0.72	1.48	2.51	2.38

Type	150K <small>With 3/8" GRP edge</small>	150 F <small>With 3/8" GRP edge</small>	150V line <small>With 3/8" GRP edge</small>	200F <small>With 3/8" GRP edge</small>	200V line <small>With 3/8" GRP edge</small>
Body material	GRP	GRP	GRP	GRP	GRP
Length	40" and 20"	40" and 20"	40" and 20"	40" and 20"	40" and 20"
Installation width	1/2"	1/2"	1 1/8"	1 1/8"	1 1/8"
Height	6"	4"	9 3/8"	4"	9 3/8"
Inner width	6 1/2"	6 1/2"	6 1/2"	8 1/4"	8 1/4"
Weight (lbs)	8.6 - 4.2	8.6 - 4.2	12.8 - 6.4	9.7 - 4.9	13.2 - 6.6
Color	Light grey	Light grey	Light grey	Light grey	Light grey
Drain spout NPS	5"	5"	5"	5"	5"
Load capacity	A15- D400	A15- D400	A15- D400	B125- D400	B125- D400
Grating	Screwed in place	Screwed in place	Screwed in place	Screwed in place	Screwed in place
Cross section (inch ²)	27.5	14.2	40	18.5	51.6
Gallon/ Foot	4.65	2.44	6.82	3.15	8.8

Installation Instructions

WOLFA Trench drains

Prior to installation, identify the required load class as set forth in DIN EN 1433.

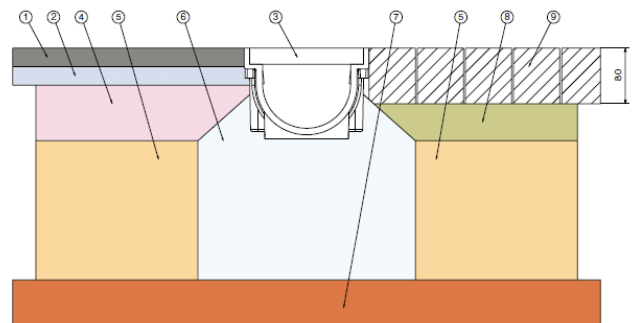
General guidelines: The flat trench drains 100/6 and 100/6V as well as the AquaStop systems, are designed for underground parking and parking garages and must be installed flush with the driveway.

We recommend installation with the proposed sheet metal strips. This allows easy drilling of dowel holes and fastening of the trench drains to the unfinished concrete floor. Joints and end plates must be sealed, as set forth in DIN EN 1433, with a permanently elastic material.

Schematic installation diagram

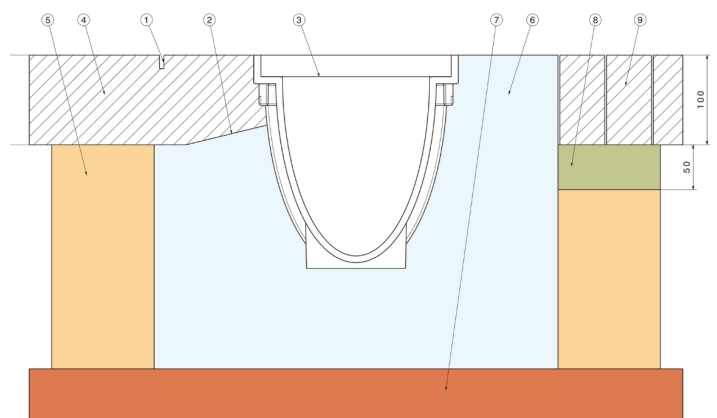
Load classes A 15 / B 125

1. Bituminous surface course, approx. 1 5/8" thick
2. Binder course
3. **WOLFA** trench drain, varies depending on load class requirement
4. Bituminous base
5. Base
6. Concrete mortar bed $\geq 2 \frac{3}{8}$ " (class A 15) and ≥ 4 " (Class B 125) around the trench drain
7. Undisturbed ground as level ground
8. Pavement bedding in stone chippings or sand
9. Pavers



Load classes A 250 / D 400/ E 600

1. Dummy joint in concrete layer (distance approx. 6")
2. Expansion joint for stress relief (distance approx. 6")
3. **WOLFA** trench drain, variant in dependence of the load class
4. Concrete driveway surface as needed for the expected load
5. Base
6. Concrete mortar bed ≥ 6 " (class C 250), ≥ 8 " (class D 400), ≥ 12 " (class E 600) around the trench drain
7. Undisturbed ground as level ground
8. Pavement bedding in stone chippings or sand
9. Pavers



WOLFA



Exclusive **WOLFA** Distributor in North America



Head Office:

895 Sandy Beach Rd
Units: 12&13
Pickering, Ontario, Canada.
L1W 3N7
Tel: +1-800-308-1043
Fax: +1-905-831-5872
Email: info@ucci.ca
Website: www.ucci.ca



Syracuse Office:

320 Gateway Park Drive
Unit: 2
North Syracuse, New York, USA.
13212
Tel: +1-800-308-1043

Tampa Office:

5143 Rio Vista Avenue
Tampa, Florida, USA.
33634
Tel: +1-800-308-1043