

---

# TRENCH DRAINAGE SYSTEMS

---

## **WOLFA** Trench drainage systems

Drainage made easy!



- made of glass fiber reinforced polyester GRP
- easy handling
- robust and extremely break-resistant
- resistant to temperatures and chemicals
- easy to clean thanks to smooth and pore-free surface

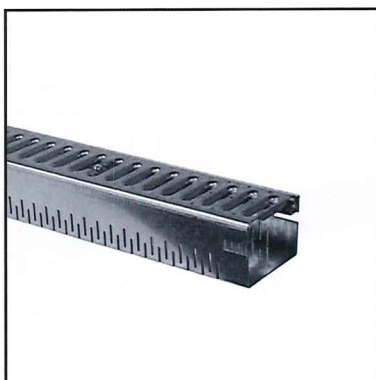
## Trench drains made of GRP and metal – light and robust

We have been producing and processing glass fiber reinforced polyester / GRP for almost 60 years. Thanks to its excellent material characteristics, this thermosetting plastic is used in all industries where durability and structural stability is essential. GRP has become an integral and indispensable component in car engineering, shipbuilding and the aerospace industry.

**WOLFA**, pioneer in the production of glass fiber reinforced windows, has been using this material as a sheet molding compound (SMC), a mixture of polyester resin, mineral filling material and a high portion of glass fibers. The glass fiber compound and the thermosetting polyester resin guarantee greatest

stability and shape retention even under extreme conditions.

Unlike traditional thermoplastics, SMC cannot be reshaped by heat once it has hardened, and retains its sturdy and stable characteristics even when exposed to extreme temperature fluctuations, Compared to drainage systems made of concrete or polymer concrete, **WOLFA** GRP trench drains exceed not only with their high break-resistance but also with their light weights which clearly reduce transport and handling costs.



Trench drain Fixo 75



Trench drain  
100/6V and 100/8V



Flat trench drain systems  
AquaStop-Ultra  
AquaStop-Mini  
AquaStop



Trench drain  
100/6 and 100/8,5S



Trench drain  
100V line

## Advantages of the **WOLFA GRP trench drains**

- light weight
- easy handling
- extremely robust
- resistant to a multitude of chemicals
- frost and heat proof, resists hot asphalt
- resistant to oil, gasoline and liquid manure
- economical



**Yard catch basin**



**Trench drain  
150V line**



**Trench drain  
150F**



**Trench drain  
200V line**



## WOLFA flat trench drains

The flat **WOLFA** trench drains are ideal in locations with low installation heights. They are the perfect solution for patio, underground parking, parking deck, warehouse and shopping arcade drainage. Equipped with a safety seam, this flat trench drain with a height as low as 58 mm is particularly suited for installation in above-ceiling floor constructions.

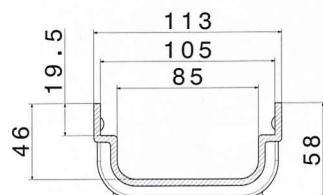
### WOLFA flat trench drain 100/6

#### Load class A 15

The perfect solution for patio or garage drainage in private homes.

#### Technical Data

Overall width 113 mm, installation height 58 mm, inner width 85 mm. Available with clamp-type slotted grating or pressure-locked grating, mesh width 30/30 and 30/10, class A 15.



Sizes in mm



Grating variants 100/6

A variable angle piece allows cross, corner or T connections. All trench drains can be drained over a downspout (nominal width 100). An optional elevation allows trench drain installation at heights of 3 to 30 cm.



#### Accessories

Trench drain end guard  
Drain connection NW 100  
Variable elbow piece  
(for corner, T or cross connections)

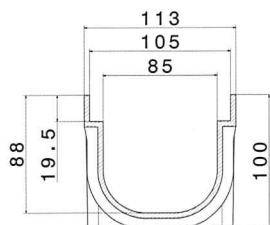
### Trench drain 100/8,5S

#### Load class A 15

The "little" **WOLFA** GRP trench drain, ideal for all areas around your home. Available with clamp-type slotted grating inside or pressure-locked grating mesh width 30/30 or 30/10, class A 15.

#### Technical Data

Length 100 cm or 50 cm, installation height 10 cm, width 11.3 cm, inner width 8.5 cm



Sizes in mm



Grating variants 100/8 5S



#### Accessories

Trench drain 100/8.5S  
90° corner angle Size 47 x 35.5 cm  
Lateral front plates and NW 100 drain connection  
Bottom with intake filter and odor stop



Corner angle



Drain connection with intake filter, odor stop and two lateral end guards.

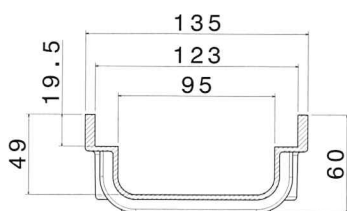
## WOLFA flat trench drain 100/6 V

Load class A 15 - C 250

The XXL flat trench drain, also suitable for public areas, heavy-duty gratings up to load class C250

### Technical Data

Overall width 135 mm, installation height 58 mm, inner width 95 mm. Available in all grating variants, class A 15 - C 250 All gratings are screwed.



Sizes in mm

### Colors:



### Accessories



Variable elbow piece for corner, T or cross connections



Drain connection with intake filter, odor stop and two lateral end guards.  
Adapter 100/6V for catch basin



Trench drain elevation

Grating variants, see 100V line

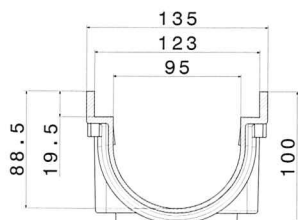
## Trench drain 100/8V

Load class A 15 - C 250

The new small universal trench drain made by **WOLFA**. Thanks to the many different load class A15 - C250 gratings, the 100/8V trench drain can also be used for professional applications. Besides plastic gratings, galvanized or stainless steel slotted gratings, we also supply pressure-locked gratings with 30/30 and 30/10 mesh widths and a cast iron version. All gratings are screwed. For load classes, see the overview on page 10.

### Technical Data

Length 100 cm or 50 cm, installation height 10 cm, Width 13.5 cm, inner width 9.5 cm



Sizes in mm

### Colors:



### Accessories

Trench drain end guard 100/8V  
Drain connection NW 100 with intake filter and odor stop and 2 lateral end guards  
Catch basin  
Adapter 100/8V for catch basin  
Variable elbow piece 100/8V



Variable elbow piece

Grating variants, see 100V line



# Trench drain 100V- Line

## Load class A 15 - D 400

The **WOLFA** GRP trench drain serves many applications. The great variety of gratings makes the 100 V line a universal trench drain system. The trench drain body is available with and without metal edge protection. Load class A 15 - D 400 gratings allow their use in private as well as public areas.

## Technical Data

Length 100 cm or 50 cm, installation height 14.9 cm  
Width 13.5 cm, inner width 9.5 cm

## Grating variants

100/6V, 100/8V and 100V line



Longitudinal bars stainless steel V2A  
A 15



Slotted grating  
A 15, galvanized



Plastic grating, charcoal gray  
B 125



Pressure-locked grating MW 30/30  
A 15 and C 250



Pressure-locked grating MW 30/10  
A 15 and C 250



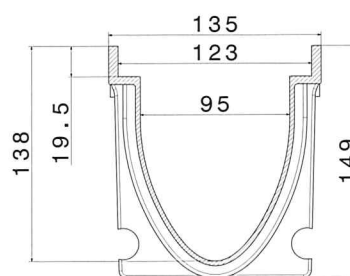
Cast iron grating  
C 250 and  
D 400 for trench drain 100V line



Resistant to frost, rust, heat  
and hot asphalt

Largely self-cleaning  
thanks to its smooth surface

With GRP or metal edge



Sizes in mm

## Colors:

- light gray
- charcoal gray  
(+ 10 %)

## Accessories

Trench drain 100V line  
Drain connection NW 100 with leaf screen,  
Lateral NW 100 drain connection  
Variable elbow piece 100V line for corner,  
T or cross connections



Variable elbow piece



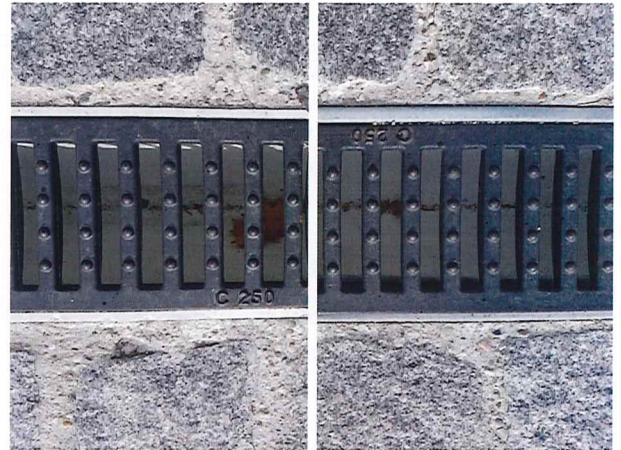
Catch basin



Lateral outlet  
NW 100 connection



Trench drain 100/V line  
with pressure-locked grating 30/10



Trench drain 100/V line  
with GRP edges left and metal edge protection right

## Trench drain 100/10L

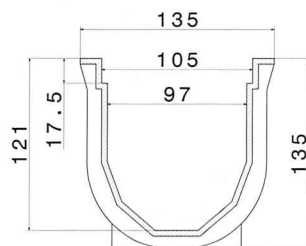
### Load class A 15

The ancestor of all trench drains has been produced without hardly any changes for 30 years. The 100/10L trench drain has proven its worth in the field and today we count several hundreds of thousand drainage meters installed at greatly satisfied customers all over the world.

The particular feature of this GRP trench drain is its flush-mounted and screwed-in-place slotted grating. Since the grating completely covers the body, it perfectly protects the trench drain edges from damage.

### Technical Data

Length 100 cm or 50 cm, installation height 13.5 cm  
Width 13.5 cm, inner width 9.7 cm. Downspout NW 100 option.



Sizes in mm



### Accessories

Catch basin

Lateral front plates and NW 100 drain connection



Catch basin



Lateral front plates  
and drain connection



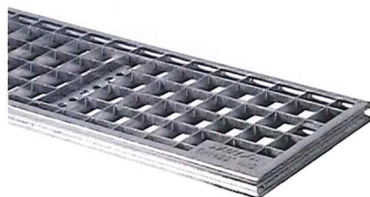
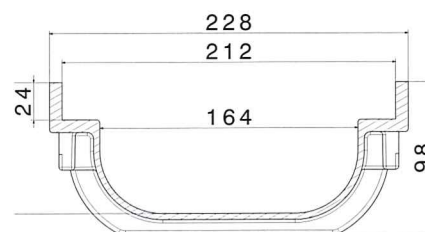
# Trench drain 150F

## Load class A 15 - D 400

The new flat trench drain with a nominal width of 164 mm and an installation height of only 98 mm! Thanks to the many different load class A15 - D 400 gratings, the 150F trench drain can also be used for commercial applications.

## Technical Data

Length 100 cm or 50 cm, installation height 9.8 cm  
Width 22.8 cm, inner width 16.4 cm



*Pressure-locked grating MW 30/30  
A 15 and B 125*



*Pressure-locked grating MW 30/10  
A 15 and B 125*



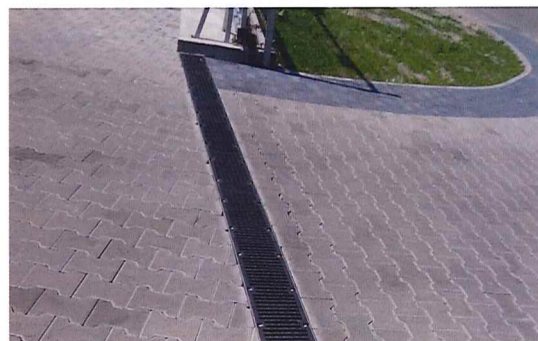
*Cast iron grating  
C 250 and D 400*

## Accessories

- Trench drain end guard 150F*
- Drain connection 150F with discharge nozzle NW 125*
- Mud bucket and odor stop*
- Adapter for catch basin*



*Trench drain end guard 150F*



*Trench drain 150F with cast iron grating*



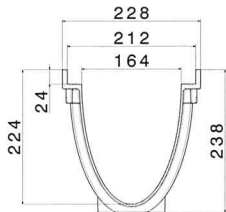
## Trench drain 150V line

Load class A 15 - D 400

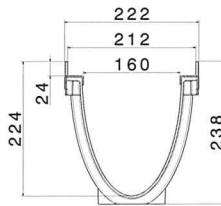
The **WOLFA** GRP trench drain serves many applications. The body is available with 8-mm GRP edge or 4-mm steel edge. Gratings for load classes A 15 – D 400 allow usage in private and public areas.

### Technical Data

Length 100 cm or 50 cm, installation height 23.8 cm  
Width 22.2 or 22.8 cm, inner width 16 cm / 16.4 cm



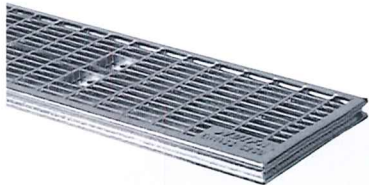
150V line with 8-mm GRP edge



150V line with 4-mm steel edge



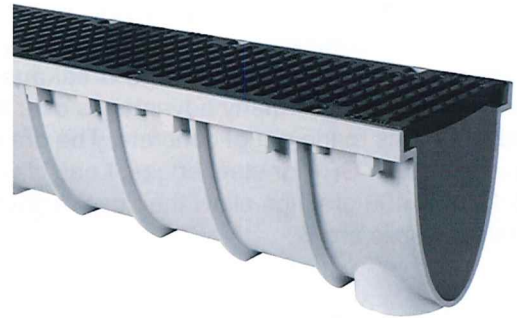
Pressure-locked grating MW 30/30  
A 15 and B 125



Pressure-locked grating MW 30/10  
A 15 and B 125



Cast iron grating  
C 250 and D 400



150V line with 8-mm GRP edge



150V line with 4-mm steel edge

### Accessories

Trench drain 150/V line  
Drain connection NW 125  
Mud bucket and odor stop  
Lateral drain connection



Catch basin  
150/V line



Lateral outlet  
Connection NW 125

## Trench drain 200V line

### Load class B 125 - D 400

The **WOLFA** GRP trench drain serves many applications. **Lightweight, robust, extremely resistant against chemicals and breakage.** These are just some of the many advantages over the heavy trench drains made out of concrete. The drain body is available with GRP or steel edges. Load class B 125 - D 400 gratings allow their use in private as well as public areas.

### Technical Data

Length 100 cm or 50 cm  
Installation height 23.8 cm  
Width 26.8 / 27.4 cm  
Inner width 21 cm / 20.6 cm



Pressure-locked grating MW 30/30  
B 125



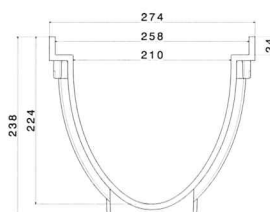
Pressure-locked grating MW 30/10  
B 125



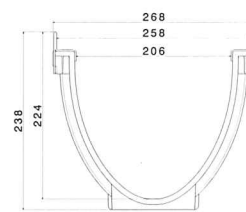
Cast iron grating  
C 250 and D 400



Trench drain 200V line with 8-mm GRP edge



200V line  
With 8-mm GRP edge



200V line  
4-mm steel edge

### Accessories

Trench drain 200V line  
With discharge nozzle NW 125  
Mud bucket and odor stop  
Lateral NW 150 drain connection



Trench drain 200V with 4-mm steel edge

## Trench drain Fixo 75

### Load class A 15

Flat roofs, balconies and patios must warrant a lasting resistance to all weather conditions. Heavy precipitations need to be taken care of quickly, safely and permanently.

The *WOLFA* drainage trench drain Fixo 75 provides the ideal solution for these particular areas.

The trench drain made of hot-dipped sheet steel is perfectly suited for surface de-watering and the drainage of the water-bearing layer between covering and fill material such as gravel and stone chippings. The trench drains come with an installation height of 75 mm and can be easily strung together via plug-in connectors. They may be covered with galvanized slotted gratings or pressure-locked gratings with 30/30 and 30/10 mesh widths. Other installation heights and widths can be supplied on request.

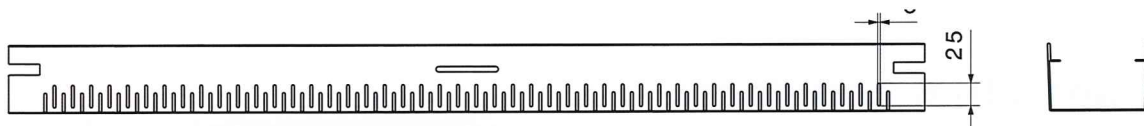


Trench drain Fixo 75

### Technical Data

Length 100 cm, installation height 7.5 cm

Width 11 cm, inner width 10.5 cm



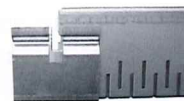
### Accessories



Trench drain Fixo 75



Grating lock  
(2 pieces per meter)



Lateral  
connecting piece



Trench drain end plate



# Flat trench drain AquaStop / AquaStop-Ultra

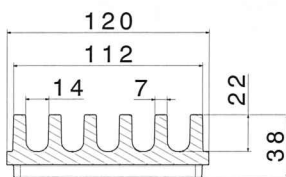
Load class D 400

## AquaStop-Mini car-trafficable

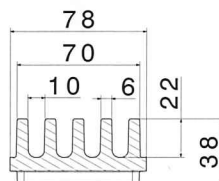
The WOLFA AquaStop drainage trench drains without grating are perfectly suited for the drainage of residual or melt water in underground parking and parking decks. The multi-channel trench drain with its extremely low build of just 25 or 38 mm is made of GRP material and therefore highly resilient. The safety seam guarantees the bottom is waterproof.

### Technical Data

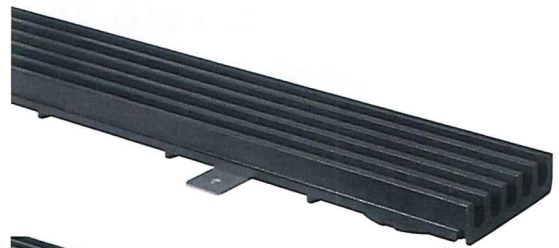
Length 100 cm or 50 cm, installation height 2.5 / 3.8 cm  
Width 12 cm and 7.8 cm



Sizes in mm  
AquaStop



Sizes in mm  
AquaStop-Mini



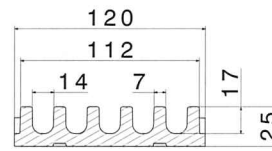
AquaStop



AquaStop-Mini



AquaStop-Ultra



Sizes in mm  
AquaStop-Ultra

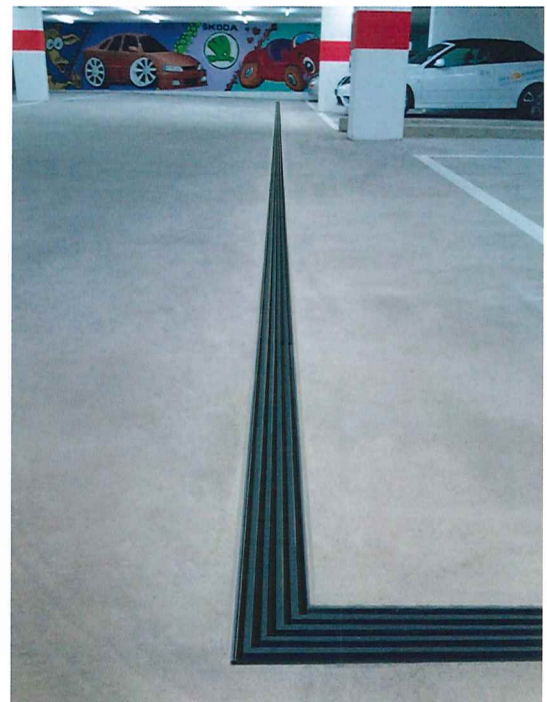
## Advantages that convince:

- installation height of just 25 or 38 mm
- maintenance-free - without grating
- rattle-free and abrasion-proof
- resistant to a multitude of chemicals
- extremely high load capacity
- easy to clean

### Accessories:

The AquaStop trench drain can also be supplied with screwed-on sheet metal strips which allows easy installation on unfinished floors. The consignment includes an installation cover plate which keeps the trench drain clean during installation.

The variable elbow piece allows connection on four sides. The open sides can be closed with a trench drain end guard. The detachable inspection flap allows fast and easy cleaning of the drain spout.



Trench drain AquaStop

## Accessories



Curve  
for AquaStop-Ultra  
Allows inclinations of up to 7°  
Can be cut to fit



For height adjustment  
from 3 cm to 30 cm



Sheet metal strips



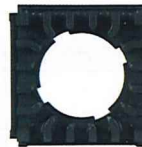
Installation cover plate  
for AquaStop



Straight intake filter  
for AquaStop  
AquaStop-Ultra  
and AquaStop-Mini



Variable elbow piece  
for AquaStop  
Size 12 x 12 cm



Intake/elbow piece with detachable inspection  
flap, four-sided trench drain connection possibility  
and drain connection NW 125 or NW 100



Drain connection ring  
NW 125 for AquaStop / AquaStop-Ultra  
NW 70 for AquaStop-Mini



Drain reducer piece  
NW 125/100  
for AquaStop



Lateral trench drain end guard for  
AquaStop, AquaStop-Mini and AquaStop-Ultra

## Yard catch basin

### The light alternative

The **WOLFA** yard catch basin is made of glass fiber reinforced polyester/GRP.

The advantages over the traditional systems made of polymer concrete or concrete are obvious:

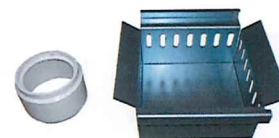
- low weight
- extremely break-resistant and solid
- resistant to many types of chemicals, oil and liquid manure
- temperature-resistant and dimensionally stable, also suited for installation in hot asphalt
- easy installation, low installation costs

### Technical Data

Installation height 35 cm, width 30 cm, depth 30 cm.  
With galvanized detachable mud trap with odor stop and  
NW 100 drain connection.  
Available with **cast iron grating grating class B 125**.



Catch basin  
with cast iron grating grating class B 125



Hot-dipped mud trap  
with odor stop  
And lateral NW 100 drain connection



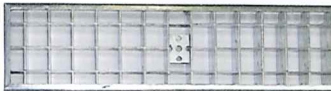
# WOLFA trench drain system overview

## Trench drain types and grating variants and their load classes according to DIN EN 1433

| Trench drain type             | Grating model / load class  |                     |                  |                          |                     |                    | Conformity according to DIN EN 1433 / DIN 19580 |
|-------------------------------|---|---------------------|------------------|--------------------------|---------------------|--------------------|---|
|                               | Slotted gratings  |                     | Plastic gratings | Pressure-locked gratings |                     | Cast iron gratings |   |
|                               | Galvanized  | V2A stainless steel |                  | Mesh width 30/30 mm      | Mesh width 30/10 mm |                    |   |
| 100/6                         | A 15  | -<br>-              | -<br>-           | A 15                     | A 15                | -<br>-             | X   |
| 100/6V                        | A 15  | A 15<br>C 250       | B 125            | A 15<br>C 250            | A 15<br>C 250       | C 250<br>D 400     | X   |
| 100/8.5S                      | A 15  | -<br>-              | -<br>-           | A 15                     | A 15                | -<br>-             | -   |
| 100/8V                        | A 15  | A 15<br>C 250       | B 125            | A 15<br>C 250            | A 15<br>C 250       | C 250<br>D 400     | X   |
| 100/10L                       | A 15  | -<br>-              | -<br>-           | -<br>-                   | -<br>-              | -                  | -   |
| 100V with GRP edges           | A 15  | A 15<br>C 250       | B 125            | A 15<br>C 250            | A 15<br>C 250       | C 250<br>D400      | X   |
| 100V with metal edge          | A 15  | A 15<br>C 250       | B 125            | A 15<br>C 250            | A 15<br>C 250       | C 250<br>D 400     | X   |
| 150 F with GRP or steel edges | -   | -                   | -                | A 15<br>B 125            | A 15<br>B 125       | C 250<br>D 400     | X   |
| 150V with GRP or steel edges  | -<br>-  | -<br>-              | -<br>-           | A 15<br>B 125            | A 15<br>B 125       | C 250<br>D 400     | X   |
| 200/V with GRP or steel edges | -<br>-  | -<br>-              | -<br>-           | B 125                    | B125                | C250<br>D 400      | X   |
| AquaStop                      | Multi-channel trench drain without grating - load class up to D 400 |                     |                  |                          |                     |                    | X   |
| AquaStop Ultra                | Multi-channel trench drain without grating - load class up to D 400 |                     |                  |                          |                     |                    | X   |



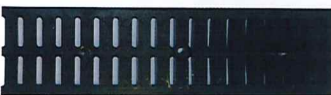
Slotted grating, galvanized  
or in V2A stainless steel



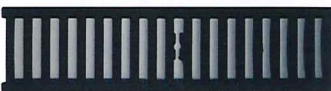
Pressure-locked grating  
Mesh width 30/30



Pressure-locked grating  
Mesh width 30/10



Plastic grating  
Length 50 cm



2-piece cast iron grating  
Length 50 cm

## Each application its perfect trench drain

Load classes as set forth in EN 1433



Class A 15\*  
Pedestrian areas and bike tracks



Class B 125\*  
Parking areas for cars and sidewalks



Class C 250\*  
Road and sidewalk shoulders



Class D 400\*  
Road lanes, parking areas, pedestrian areas and  
similar sealed traffic areas

\*Test load in kN as set forth in DIN EN 1433



## Installation examples WOLFA trench drains

The first step is the choice of the required load class as set forth in DIN EN 1433.

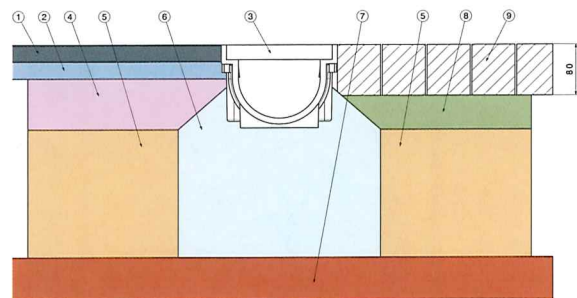
General guidelines:

Flat trench drains 100/6, 100/6V and the AquaStop systems designed for underground parking and parking decks must be installed flush with the driveway. We recommend installation with the proposed sheet metal strips. The trench drains can so be easily be secured to the raw concrete floor. Joints and end plates must be sealed as set forth in DIN EN 1433 with a permanently elastic material (Terostat MS 9360 by Henkel).

## Schematic installation diagram

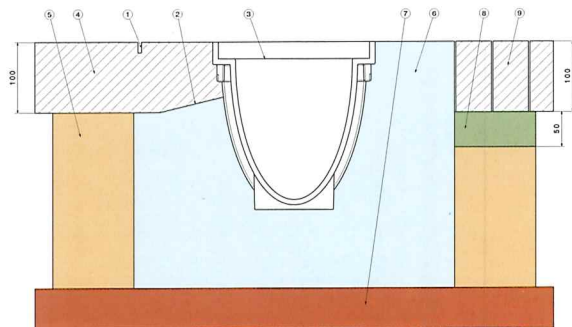
### Load classes A 15 / B 125

1. Asphalt surface course, approx. 4 cm thick
2. Binder course
3. **WOLFA** trench drain, variant in dependence of the load class
4. Asphalt base
5. Base
6. Concrete mortar bed  $\geq 6$  cm (class A 15) und  $\geq 10$  cm (Class B 125) around the trench drain
7. Undisturbed ground as level ground
8. Pavement bedding in stone chippings or sand
9. Pavers



### Load classes A 250 / D 400

1. Dummy joint in concrete layer (distance approx. 15 cm)
2. Expansion joint for stress relieve (distance approx. 15 cm)
3. **WOLFA** drainage trench drain, variant in dependence of the load class
4. Concrete driveway surface as needed by the expected load
5. Base
6. Concrete mortar bed  $\geq 15$  cm (class C 250) and  $\geq 20$  cm (class B 400) around the trench drain
7. Undisturbed ground as level ground
8. Pavement bedding in stone chippings or sand
9. Pavers





Your trading partner:



**Head Office:**

895 Sandy Beach Rd  
Units: 12&13  
Pickering, Ontario, Canada.  
L1W 3N7  
(Tel) +1-800-308-1043  
(Fax) +1-905-831-5872  
Email: [info@ucci.ca](mailto:info@ucci.ca)  
Website: [www.ucci.ca](http://www.ucci.ca)

**Syracuse Office:**

320 Gateway Park Drive  
Unit: 2  
North Syracuse, New York, USA.  
13212  
(Tel) +1-800-308-1043

**Tampa Office:**

5143 Rio Vista Avenue  
Tampa, Florida, USA.  
33634  
(Tel) +1-800-308-1043